

ADAPTER CABLE FID620



The adapter cable FID620 enables the use of our radios on KUBOTA construction machinery. The FID620 allows the connection between the Asia plugs and the ISO connectors for loudspeakers and power supply on the KUBOTA construction machines KUBOTA U55-4, U48-4, KX057-4 and KX080.

• FOR WHICH MACHINE?

The adapter cable adapts to the following KUBOTA mini excavator* :

- U55-4
- U48-4
- KX057-4
- KX080

• FOR WHICH RADIOS?

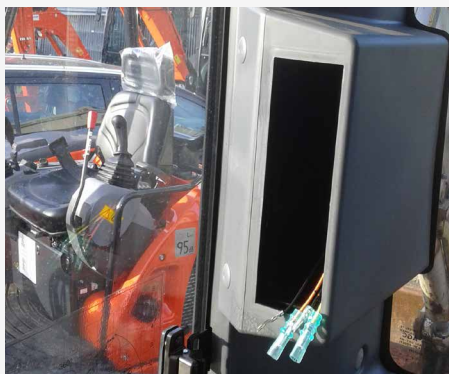
The models below are compatible with the adapter cable FID620.

- Tuner USB Radio : CT412
- Bluetooth Radio: CT412_BT
- Bluetooth DAB+ Radio : CT412_DAB_BT

*Non-exhaustive list. The adapter cable can be used for machines that have the same connections.

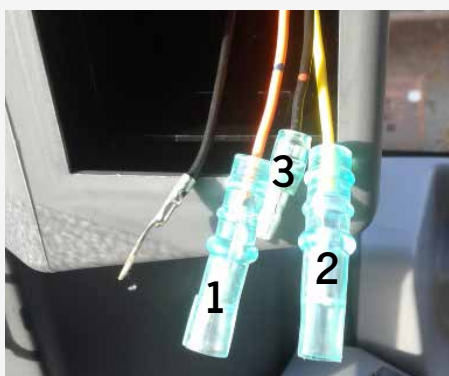
ADAPTER CABLE FID620

• INSTALLATION GUIDE



1 - Radio

→ Pull out the plastic parts and take the cable of the machine.



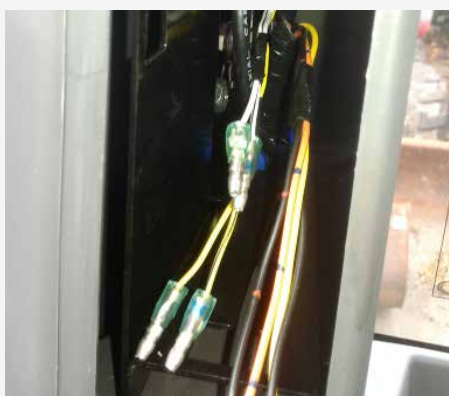
2 - Wiring of the radio

Connect the adapter cable FID620 as follows :

| | Cable of the machine | FID620 cable |
|---|----------------------|---------------------------------|
| 1 | Orange | Yellow (+12V continuous supply) |
| 2 | Yellow | Red (+12V ignition) |
| 3 | Black | Black (ground cable) |

Special case: CARLIGHT (valid only for the radio CT412BT)

The Carlight function enables the illumination of the button when the traffic lights are switched on. To enable this feature on the CT412BT, connect the orange cable to the blue cable of the FID620 adapter cable.



3 - Wiring the speakers

Connect the adapter cable FID620 as follows :

| Cable of the machine | FID620 cable |
|----------------------|--------------------------------------|
| Yellow (black line) | White (black line) : Left speaker |
| Yellow | White : +left speaker |
| White (black line) | Gray (black line) - Right speaker |
| White | Gray : +right speaker |

→ Fix the mounting frame on the radio

ADAPTER CABLE FID620

• INSTALLATION GUIDE



4 - Antenna

- Connect the antenna and set it upright
- If you have a CT412_DAB_BT, the associated antenna goes on the windshields
 - Fix the self-adhesive antenna on the rear window or on the side window (the window should not be mobile)
 - Connect the SMB plug to the corresponding plug of the radio.



5 - Connection

- Connect the black and brown plugs of the adapter cable FID620 to the radio.



6 - Completion phase of the installation

- Check the radio operation and install the radio
- Your radio is ready

In order to use the radio optimally, please read the operating instructions.

ADAPTER CABLE FID620

• RECOMMANDATIONS

AMS Diffusion assumes no responsibility for any changes made by the manufacturer.

• WARRANTY

The product is guaranteed for two years as from the date of sale to the end user, remembering that the sale must take place within 24 months after delivery

• AFTER SALES SERVICE

Reserved for professionals

→ Download the service form from our site <http://pro.ams-diffusion.fr/aftersale/>

When returning, please include the following documents for managing repairs and the warranty:

- The return-authorisation form duly completed
- A copy of the invoice with the date of sale to the end user
- The reason for the claim, or a description of the malfunction.

For more information, contact our technical department

→ Tel : +33 (0)3 27 94 44 44 ou @ : contact@ams-diffusion.com

If you are the end user

Please go to your dealer.



AMS Diffusion

Tél. +33 3 27 94 44 44

Fax. +33 3 27 94 44 45

contact@ams-diffusion.com